

# Wall Mount Door holder

FS-DH-D501

## Features

- Dual Voltage 12/24VDC(Adjustable)
- MOV provides Reverse current protection.
- Wall Mounted
- Holding force of 50 kg (110 lbs) under collinear load.
- **Fail-Safe (Power-off Release)**.Used for emergency exits/fire doors to ensure safe egress during power failure.

## Power Failure Release

- Power-off Release (releases when power is cut)
- Fail-Safe Mode (automatically releases when power is lost, locks when powered)
- De-energized Release



## HOLDER

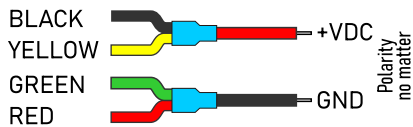


## HOLDER MOUNT

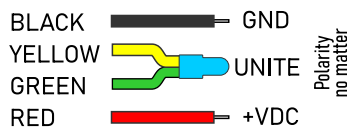


## Wiring diagram

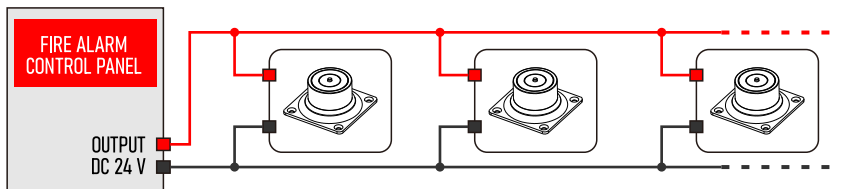
### 12V WIRING SETTING



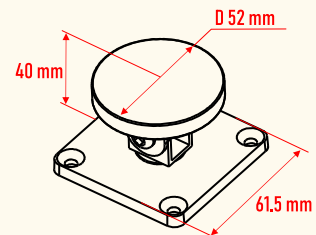
### 24V WIRING SETTING



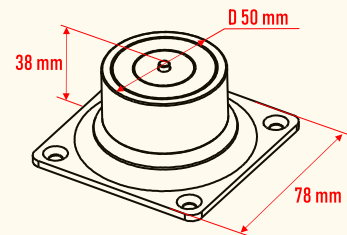
## FIRE ALARM CONNECTION IN PARALLEL



Size:61.5x61.5x40mm



Size:78x78x39mm



## Specification

Power	12V DC-24V DC (Selectable)
Current Draw	12V/140mA 24V/70mA
Holding force	50Kg (110Lbs)
Finishes	Armature: Chromium Shell: High Temperature paint
Operating Temperature	-20C~+55C (-4F~131F)
Operating Humidity	0~95%
Weight	0.85 Kg
Suitable for	All Kind of Single(Double) Smokeproof Doors

## INSTALLATION

