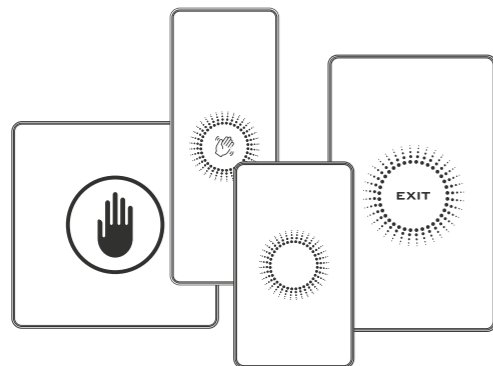


# Touchless Exit Buttons

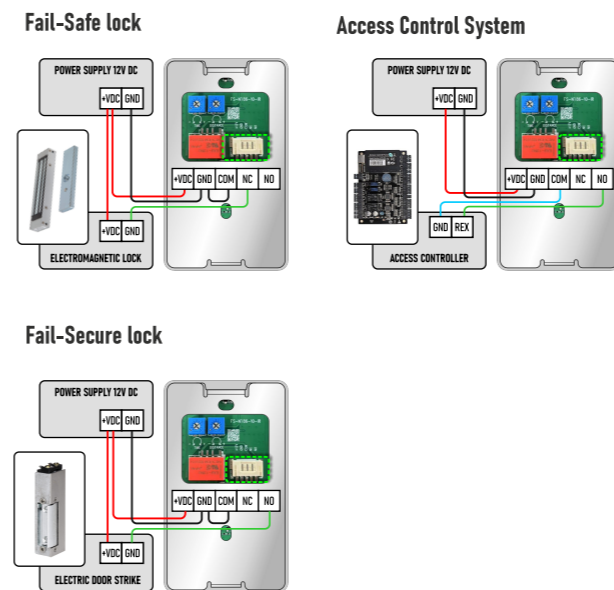
## User manual



### Basic specification 1

Power	12-24VDC
Output Contact	NO / NC / COM
Contact rating	30W / 1A Max
Proximity distance	Capacitance: 2-5 cm; IR Sensor: 5-30 cm
Timer control	1-30 sec
LED indication	Blue(StandBy) / Green (Activated)
Breath light	YES, Optional
Standard model	ABS Plastic frame + Acrylic
Professional model	Metal frame + Tempered glass
Enclosure	IP53 / IP 68 (optional)
Operating temperature	-40°C+60°C
Operating humidity	0-98%

### Connection & Control 2



### Features 3

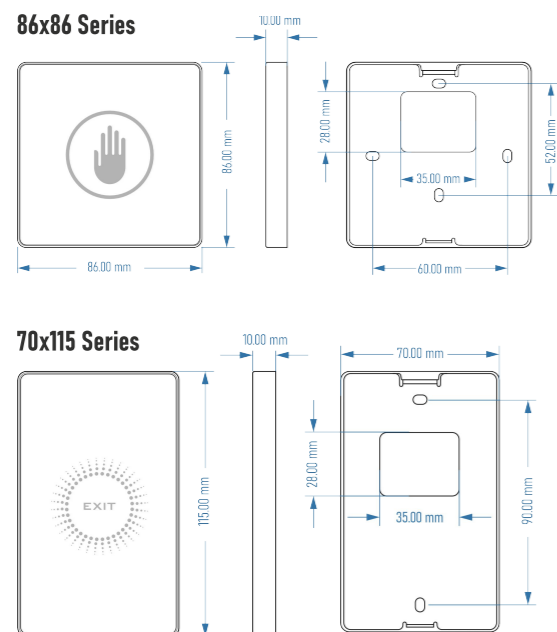
#### Distance & Time Control



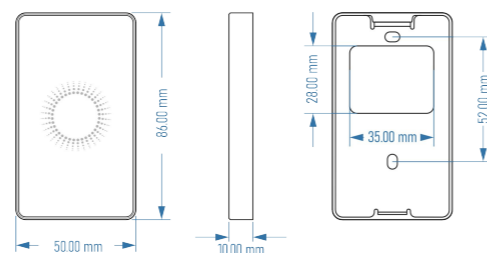
To control the proximity sensing distance and time delay, use a screwdriver. Turn Rotary Knob 1 for time delay and Knob 2 for proximity distance. Rotate clockwise to increase and counterclockwise to decrease.

- Breath Light Mode (ON/OFF)** - 3 quick hand waves within 10 seconds then hold your hand in place until the LED blinks twice.
- Reverse Indication Colors (ON/OFF)**- 5 quick hand waves within 10 seconds then hold your hand in place until the LED blinks twice.
- Latching Mode (ON/OFF)**- 7 quick hand waves within 10 seconds then hold your hand in place until the LED blinks twice.

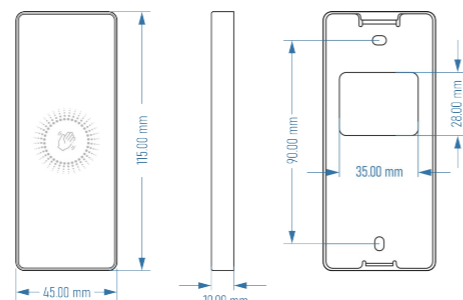
### Dimensions 4



### 50x86 Series 5



### 45x115 Series



### Warranty 6

**Warranty Terms:** The exit button is warranted for 2 years from the date of purchase against defects in materials and workmanship.

**Claims:** To make a claim, contact customer service with proof of purchase. The product may need to be returned for inspection.

**Exclusions:** This warranty does not cover misuse and wrong installation, unauthorized modifications, or natural disasters. Cosmetic damage and normal wear and tear are not included.

**Repair/Replacement:** Defective products will be repaired or replaced at the manufacturer's discretion. The warranty for repaired/replaced items continues for the remainder of the original period.

**Limitations:** The warranty is non-transferable and limited to the original purchaser. The manufacturer's liability is limited to the product's value.

### Certification 7

#### CERTIFICATION

PRODUCT MODEL: \_\_\_\_\_

CHECKER: \_\_\_\_\_

DATE: \_\_\_\_\_

**Thank you for choosing our product!**  
We appreciate your purchase and are committed to providing you with the highest quality.

If you have any questions or need assistance, please don't hesitate to contact us.